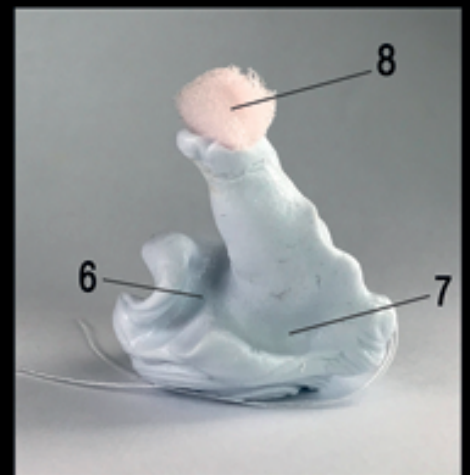
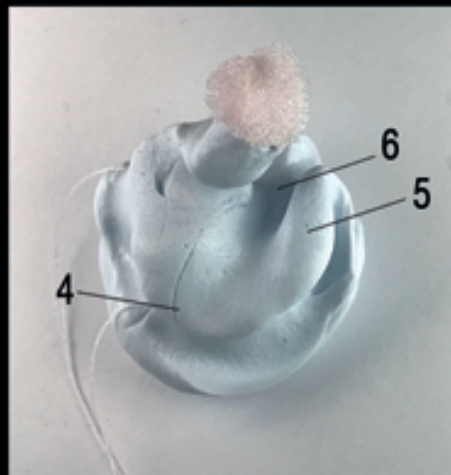
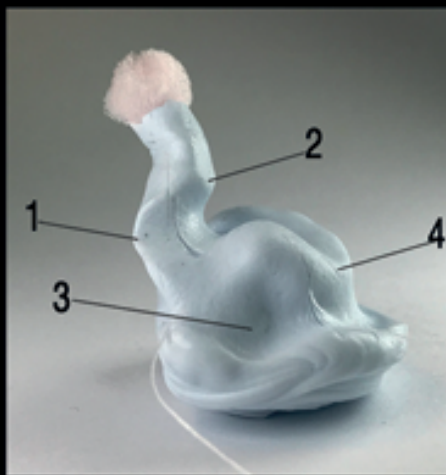




- 1 - First bend
- 2 - Second bend
- 3 - Anti-Tragus
- 4 - Concha
- 5 - Helix
- 6 - Crus of Helix
- 7 - Tragus
- 8 - Impression pad



Place the impression pad (8) 4 mm past the second bend (2). It needs to be located in the bony area of the ear. Use the kneadable impression material without flowability, that you would normally use for High power earmolds or hearing protection molds. Build up slight pressure when inserting the material into the canal so it touches all skinsurface in the ear. The Helix (5) must be fully visible in the impression. To get a good vision on TMJ movement, let the client open his mouth wide once and smile shortly. It's very important to let the material fill the crus of Helix (6), plus a bit extra.

